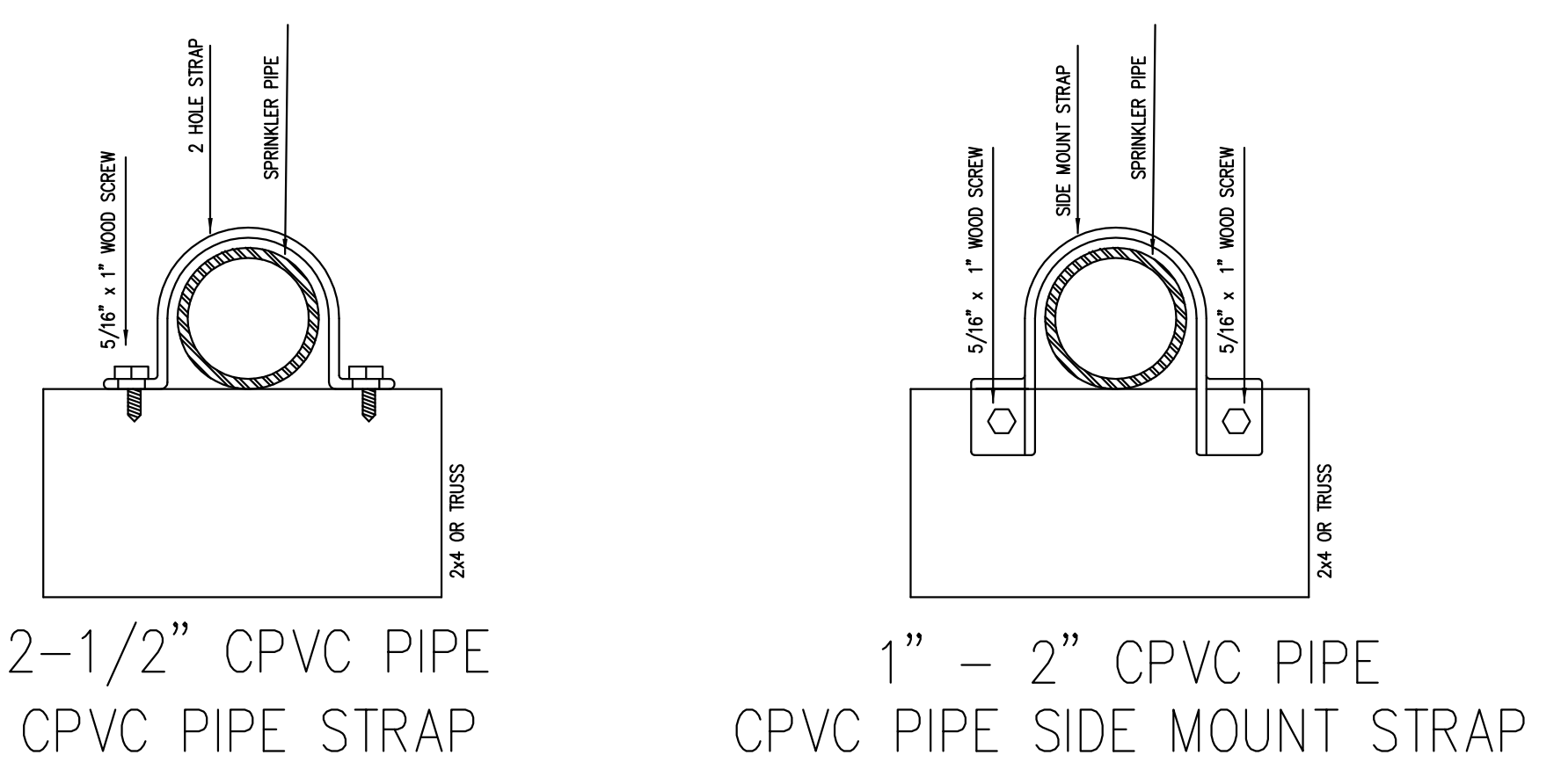


ALL CPVC PIPE TO BE INSTALLED ON TOP OF CEILING 2x4. GC TO COVER WITH PLASTIC AND INSULATE ABOVE PIPING TO KEEP FROM FREEZING.



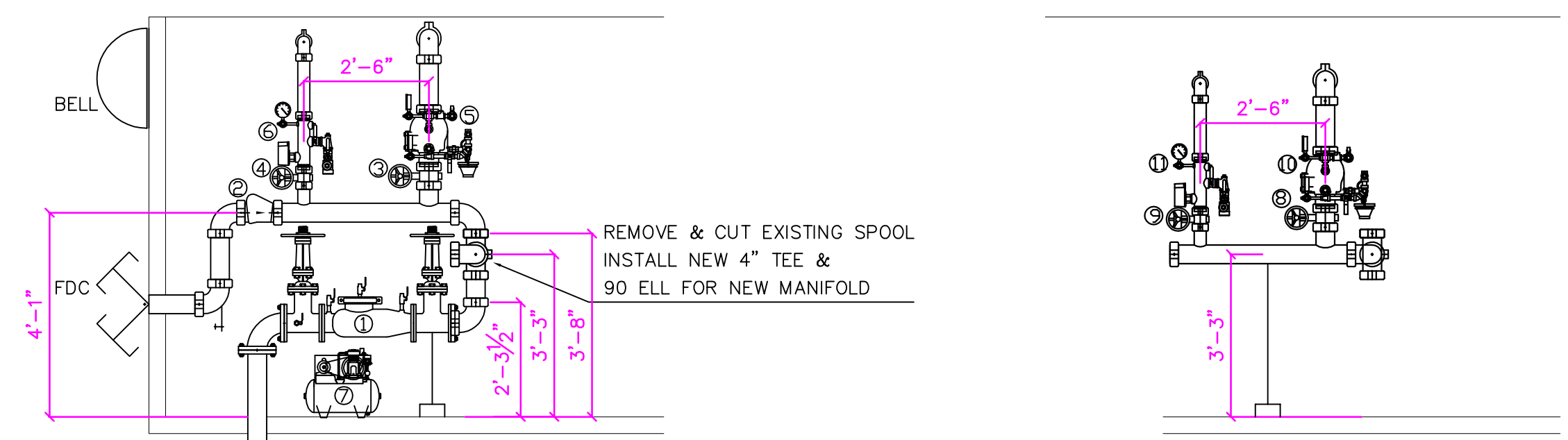
CPVC HANGER DISTANCE PER NFPA 13 STANDARDS
 1" PIPE = 6'-0" MAXIMUM SPACING
 1-1/4" PIPE = 6'-6" MAXIMUM SPACING
 1-1/2" PIPE = 7'-0" MAXIMUM SPACING
 2" PIPE = 8'-0" MAXIMUM SPACING
 2-1/2" PIPE = 9'-0" MAXIMUM SPACING

ALL CPVC PIPE TO BE INSTALLED ON TOP OF CEILING 2x4. GC TO COVER WITH PLASTIC AND INSULATE ABOVE PIPING TO KEEP FROM FREEZING.

DESIGN NOTES

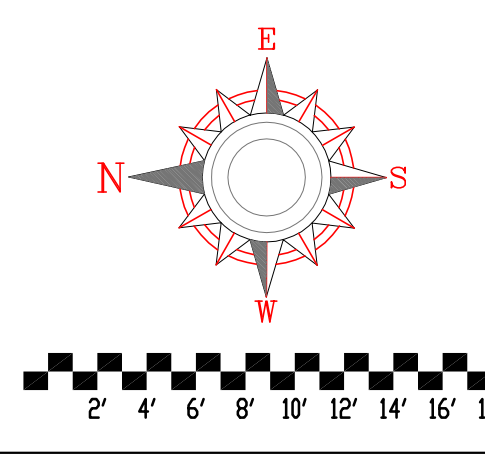
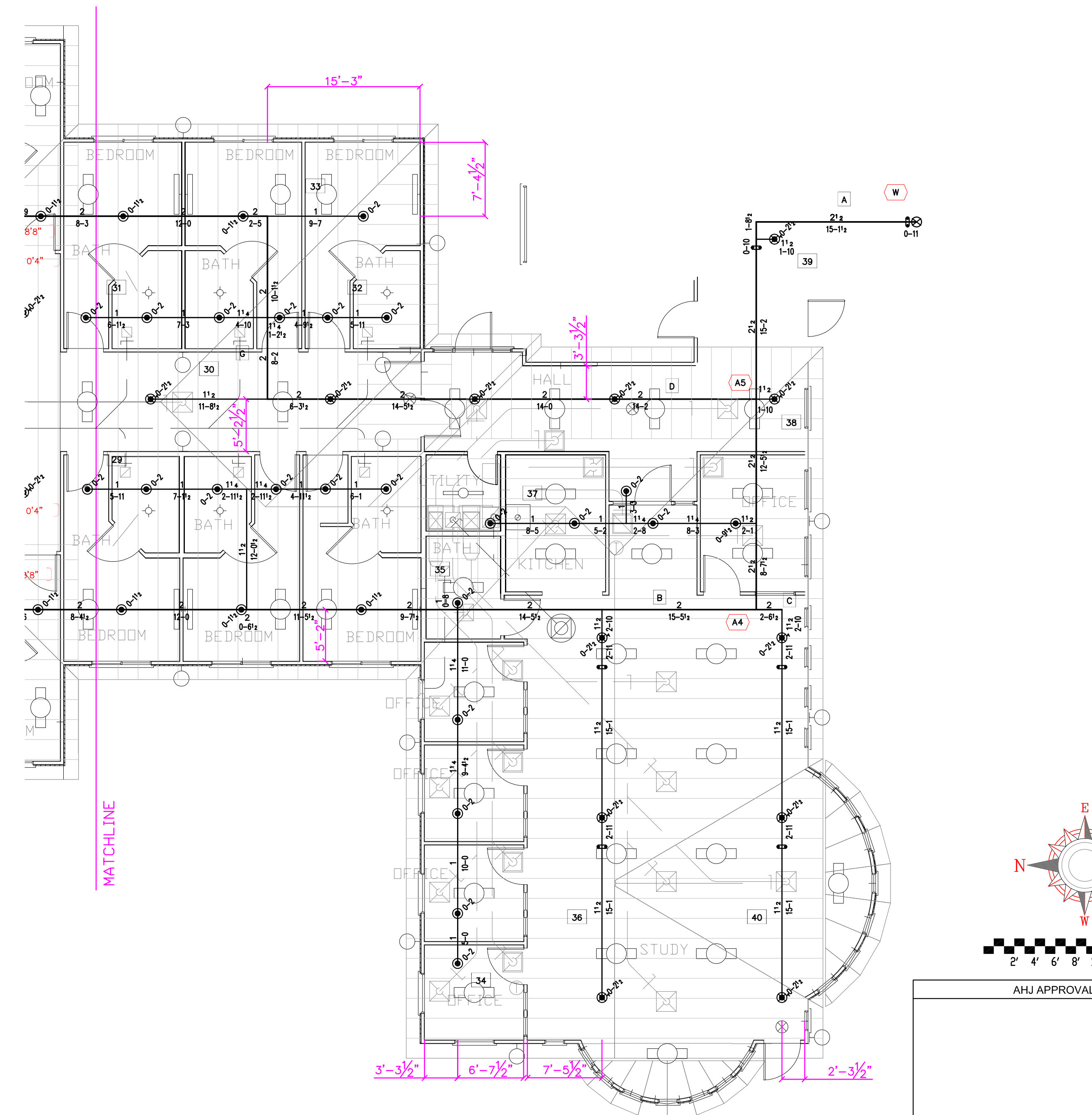
THIS WET SYSTEM HAS BEEN DESIGNED TO A 1.0 GPM FOR THE MOST REMOTE 900 SQ. FT. WITH A 100 GPM HOSE STREAM ALLOWANCE. MAXIMUM HEAD COVERAGE NOT TO EXCEED 384 SQ. FT. ALL PIPE TO BE INSTALLED PER NFPA-13 STANDARDS. PIPE AND FITTINGS GROOVED & THREADED UL-FM LISTED. VALVES & DEVICES ARE UL-FM LISTED. ALL PIPING TO BE CPVC. REMOTE AREA HAS BEEN HYDRAULICALLY CALCULATED. CONSTRUCTION: WOOD. OCCUPANCY: NURSING HOME. END OF THE LINE PENDANT HANGER RODS ARE TO BE RUN TO PIPE OR SPACERS ARE TO BE ADDED TO HOLD PIPE TIGHT. WHEN MAXIMUM STATIC OR FLOWING PRESSURES EXCEED 100 PSI IMPORTANT: IN LOCALITIES SUBJECT TO FREEZING CONDITIONS IT IS THE OWNER'S RESPONSIBILITY TO PROVIDE HEAT THROUGHOUT WET PIPE SPRINKLER SYSTEM AREAS AND IN ENCLOSURES FOR DRY PIPE, DELUGE, OR OTHER TYPES OF VALVES CONTROLLING WATER SUPPLIES TO SPRINKLER SYSTEMS.

HEADS NOT CENTER OF TILE LOCATIONS FOR REFERENCE ONLY. ACTUAL LOCATIONS MAY VARY.



HYDRAULIC INFORMATION	
REMOTE AREA 1	
System Type	WET Dry System Capacity N/A gal
System Classification	NURSING HOME Max. Storage Height N/A
Hazard Group	LIGHT Sprinkler Head Coverage 384 (max)
Hydraulically Calculated	Yes # Heads 9
Design Date	Density 10 gpm/sq.ft. 900 sq.ft.
Hose Allowance	100 gpm, Total System sq. ft. 22,747
Base of Riser Requirements	174 gpm @ 57.3 psi
System Demand at City Main	274 gpm @ 59.9 psi
Water Supply	Static 65 psi, Residual 56 psi, Flow 1632 gpm
Test Taken @	At Site By BARLING WW Date 2
City Main Size/Type	8" psi, Residual 56 psi, Flow 1632 gpm
Inside Sprinkler Pipe Type	CPVC Sprinkler UC Pipe Size/Type 8" Ductile Iron

- ① EXISTING 4" AMES 2000SS
- ② EXISTING TYCD 4" CV-1 CHECK VALVE
- ③ EXISTING TYCD 4" BF-V BUTTERFLY VALVE
- ④ EXISTING TYCD 2-1/2" BF-V BUTTERFLY VALVE
- ⑤ EXISTING TYCD 4" DVP-1 DRY PIPE VALVE
- ⑥ EXISTING 2-1/2" TYCD MDD 13 MANIFOLD
- ⑦ EXISTING AIR COMPRESSOR
- ⑧ NEW TYCD 4" BF-V BUTTERFLY VALVE
- ⑨ NEW TYCD 2-1/2" BF-V BUTTERFLY VALVE
- ⑩ NEW TYCD 4" DVP-1 DRY PIPE VALVE
- ⑪ NEW 2-1/2" TYCD MDD 13 MANIFOLD



AHU APPROVAL

DATE	REVISION

SYMBOL	POSITION	FINISH	SPRINKLER HEAD LEGEND
①	TRIP	WHITE	TRIP
②	TRIP	WHITE	TRIP
③	TRIP	WHITE	TRIP
④	TRIP	WHITE	TRIP
⑤	TRIP	WHITE	TRIP
⑥	TRIP	WHITE	TRIP
⑦	TRIP	WHITE	TRIP
⑧	TRIP	WHITE	TRIP
⑨	TRIP	WHITE	TRIP
⑩	TRIP	WHITE	TRIP
⑪	TRIP	WHITE	TRIP
⑫	TRIP	WHITE	TRIP
⑬	TRIP	WHITE	TRIP
⑭	TRIP	WHITE	TRIP
⑮	TRIP	WHITE	TRIP
⑯	TRIP	WHITE	TRIP
⑰	TRIP	WHITE	TRIP
⑱	TRIP	WHITE	TRIP
⑲	TRIP	WHITE	TRIP
⑳	TRIP	WHITE	TRIP
㉑	TRIP	WHITE	TRIP
㉒	TRIP	WHITE	TRIP
㉓	TRIP	WHITE	TRIP
㉔	TRIP	WHITE	TRIP
㉕	TRIP	WHITE	TRIP
㉖	TRIP	WHITE	TRIP
㉗	TRIP	WHITE	TRIP
㉘	TRIP	WHITE	TRIP
㉙	TRIP	WHITE	TRIP
㉚	TRIP	WHITE	TRIP
㉛	TRIP	WHITE	TRIP
㉜	TRIP	WHITE	TRIP
㉝	TRIP	WHITE	TRIP
㉞	TRIP	WHITE	TRIP
㉟	TRIP	WHITE	TRIP
㊱	TRIP	WHITE	TRIP
㊲	TRIP	WHITE	TRIP
㊳	TRIP	WHITE	TRIP
㊴	TRIP	WHITE	TRIP
㊵	TRIP	WHITE	TRIP
㊶	TRIP	WHITE	TRIP
㊷	TRIP	WHITE	TRIP
㊸	TRIP	WHITE	TRIP
㊹	TRIP	WHITE	TRIP
㊺	TRIP	WHITE	TRIP
㊻	TRIP	WHITE	TRIP
㊼	TRIP	WHITE	TRIP
㊽	TRIP	WHITE	TRIP
㊾	TRIP	WHITE	TRIP
㊿	TRIP	WHITE	TRIP

SYMBOL	LEGEND
①	WELDED BRANCHLINE TAG/LOW DIRECTION
②	BRANCHLINE TAG
③	CROSSMAN/FEDMAN TAG/FLOW DIRECTION
④	HANGER TAG
⑤	HYDRAULIC NODE POINT
⑥	GROOVED OR THREADED COUPLING
⑦	GROOVED OR THREADED CAP

SYMBOL	LEGEND
①	PIPE RISE IN ELEVATION
②	PIPE DROP IN ELEVATION
③	CEILING HEIGHT
④	2x4 LIGHT
⑤	2x2 HVAC GRILL
⑥	SYSTEM RISER LOCATION

SYMBOL	LEGEND
①	WATER MOTOR ALARM
②	ELECTRIC BELL LOCATION
③	REVISION
④	FLEXIBLE SPRINKLER DRIP
⑤	EXISTING SPRINKLER PIPE
⑥	NEW SPRINKLER PIPE

FIRE PROTECTION SYSTEM DESIGN
 THIS FIRE PROTECTION SYSTEM DESIGNED BY:
 DUNK FIRE & SECURITY
 DRAWING IS PER NFPA-13 STANDARDS
 R.M.E.: Joseph E. Williams, License #082
 N.I.C.E.T. CERTIFICATION NUMBERS
 Joseph E. Williams, 05111 - Normal, Illinois, 19729 - City, Illinois, 11208

AR LIC. 018100010
 3446 Wagon Wheel Road
 Springdale, AR 72762
 Office (479) 505-8833 Fax (479) 505-1465
 www.dunkfire.com



Contract: Montgomery & Sons
 Drawn By: RWILDE
 JOB#: SP-0000-09
 SCALE: 1/8"=1'-0"

FP 1.0
 Date: JULY 30, 2010